

SANTA FE MODEL RAILROAD CLUB



This month's SFMRRC Mtg: Weds., November 8, 2017 ~6:30.p.m.

This month's meeting is at the Santa Fe Children's Museum, 1050 Old Pecos Trail, Santa Fe. Please see the map page for directions. Our host is Bob Spude. *On the agenda:* Introduction of visitors and new members, Presidential items report, the XX Annual Model Railroad Show October-November, November Open Houses, the National Bank Lionel Christmas train plans, Christmas Party, Election for 2018, Lamy news, Door Prize drawing, Albuquerque Rails Along the Rio Grande Train Show, and More. Thanks to Susan Cover you can find details on the web page at:

<http://santafemodelrailroadclub.org/>

November Means National Model Railroad Month Open Houses



Coordinator Vick Thomas reports that as part of the World's Greatest Hobby November celebration, SFMRRC will host "Members Only" Open Houses on Saturday, November 11th. This should be a fun time with an opportunity to see some world class model railroad layouts, including Chuck Cover's PRR Shamokin Branch, shown at



right. The day will begin with an optional breakfast at Cafe Fina, which is located near the first layout. After breakfast, we will visit three layouts, followed by an optional lunch at Tecolote Cafe.

Then, we'll visit three more layouts. NOTE: the layouts will be open ONLY during the indicated times. The itinerary with the times each layout will be open and maps with directions to each of the layouts can be found on the club web page at:

<http://www.santafemodelrailroadclub.org/home> Please join us for a fun day of model railroading!

Santa Fe Model Railroad Train Show Number XX, October-November

Next Saturday, November 4, we operate one last time, from Noon to 4 p.m., then everything is put away until next year. Individuals can start taking their own modules apart to take home after the show. We will need as many hands as possible on Sunday, November 5th, starting at noon to take the club modules down and load them into the trailers. Bill McSweeney and Paul Enstrom will arrive around noon with the trailers and we hope to have everything packed and loaded by 3 p.m. Thanks to everyone who has helped make the 20th show a grand success. (See photos next page).

SFMRRC December Meeting/Christmas Party, December 10.

Thanks to the hard work of Bill Flounders, our Christmas Party will be at Arabel's (owned by the Loyal Hound folks) in the Agora shopping center, Eldorado, on Sunday evening, December 10th. Meet and greet starts at 6:00 with 7:00 dinner. Cost is still \$20.00 per person to be paid to the club in advance. Payment directions and menu options will be sent in a separate flyer with map and more details.

NEXT STOP... *Future SFMRRC Monthly Meeting Hosts*

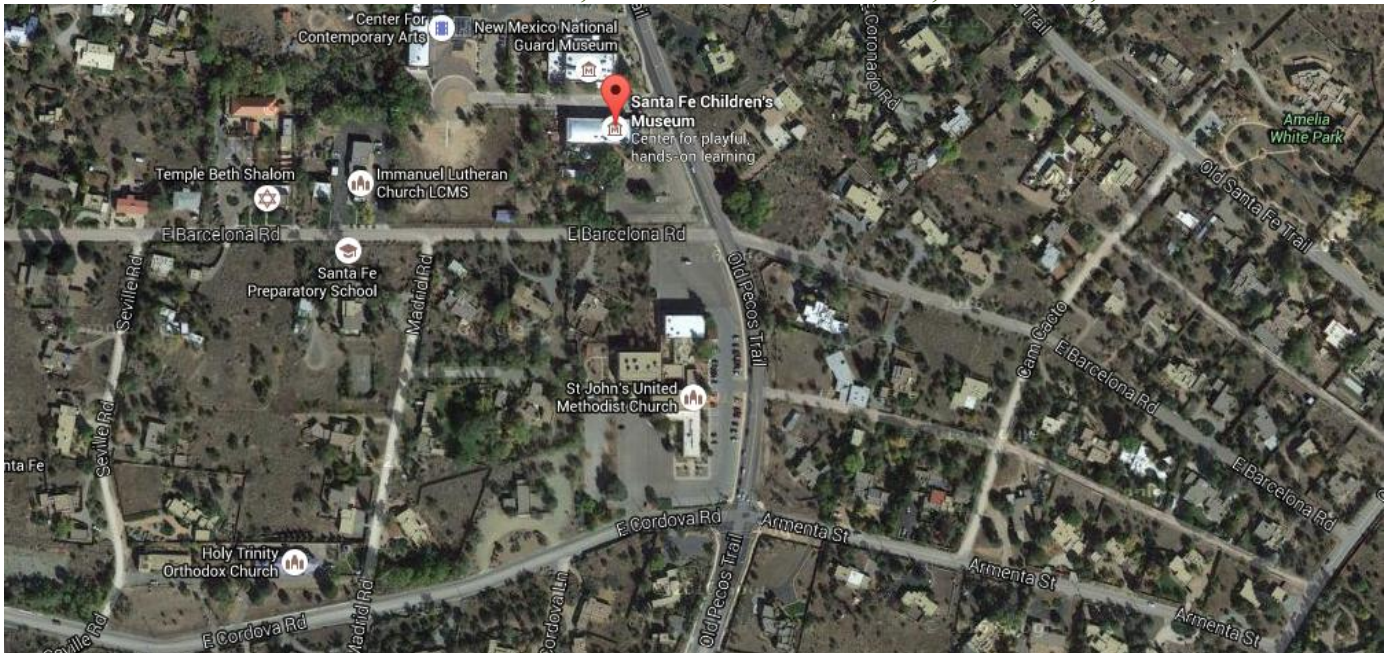
November 8	Host Bob Spude	December 10.....	Christmas Party
January	Host Needed	February	Host Needed
March	Host Needed	April	Host Needed

.... if you would like to host a meeting, contact the secretary at 466-1476 or spudes@msn.com



Thanks to all who came out to run trains, greet visitors or just say hi, all of which helped make the 20th annual show a success: shown above are Alexander, Staples, Haber, Messer, Terhune, Roof, Flounders, Enstrom, Lee, Kellerman, Rotto, Thomas, Wetsdyk, Meyer, Williams, Wenthe, Messer; while lending a hand, but not shown, were Balano, Brock, Day, Dolci, Ennis, Ferns, Gould, Harnisch, Haworth, Hayden, Jensen, Liebman, Luxford, McSweeney, Mizerak, Moeller, Moose, Mundis, Nunes, Payson, Sloan, Spude, Sunderman, Taylor, and others.

SFMRRC meets: 6:30 p.m. Weds., November 8, 2017
At the Santa Fe Children's Museum, 1050 Old Pecos Trail, Santa Fe, NM 87505



DOWN THE TRACKS: A Calendar of Coming Big Events

- October 21-22, 28, and Nov 4: SFMRRC's XXth Santa Fe Model Train Show, De Vargas Mall
- November 4-5: Southwest Model Railroad Club Fall Show, Los Lunas
- November: Kid's Train Club Activities, Santa Fe Children's Museum
- November 18-19: Rails Along the Rio Grande, Albuquerque, NMRA
- November 11: SFMRRC Open Houses
- December 9-31: 1st Nat'l Bank Lionel Christmas Train
- December 10: Club Christmas Party
- December 17: Railyard Santa's Village

Kid's Train Club

John Harnisch reports the Santa Fe Children's Museum Kid's Train Club had two great sessions in October and have more planned for November. They are looking for help with HO activities as well as O scale donations: O kits, cars, structures, or? If you wish to volunteer or have donations contact John at pjharnisch@msn.com. Meyer photo.



2018 Dues Are Due

Treasurer Gary Lee reminds all its time to be sending in those renewal checks before the holiday rush. Still just \$25 per year. Please send your check made out to "SFMRRC" to him at 14 Loma Blanca, Santa Fe, New Mexico 87506.

*If you would like to host a meeting, contact the secretary at 466-1476 or spudes@msn.com.
Please send news to the secretary, Bob Spude, 466-1476 or E-mail to spudes@msn.com
This newsletter is edited and published on paper by Bob Spude; webmaster is Susan Cover
<http://santafemodelrailroadclub.org/>*