

# SANTA FE MODEL RAILROAD CLUB



## This month's SFMRRC Mtg: Weds., September 13, 2017 ~6:30.p.m.

This month's meeting is at the Santa Fe Children's Museum, 1050 Old Pecos Trail, Santa Fe. Please see the map page for directions. *On the agenda:* Introduction of visitors and new members, Presidential items report, the National Bank Christmas train rehab work and plans, the SFMRRC XX Annual Model Railroad Show October, November Open Houses, Lamy news, Door Prize drawing, Albuquerque Train Show, ATSF 2926 updates, and More. Thanks to Susan Cover you can find details on web page at: <http://santafemodelrailroadclub.org/>



## **Santa Fe Model Railroad Train Show Number XX, October-November**

It was all put away. Now it's about time to bring it all out again for the fall show. At the September meeting we will be discussing our XXth annual train show. As in the summer show -- a great success at De Vargas Mall -- we will set-up in the old Hastings store space (above). President Ed Williams worked out dates Oct 21, 22, 28, and Nov 4<sup>th</sup>. Come to the September meeting as we discuss working out the details.

## **November Open Houses**

Edward Aneshensel reported at the August meeting on November Open Houses. Discussions are underway to show case the Kid's Train Club at the Children's Museum and to potentially do members only open houses this year, possibly at Dick Rotto and Chuck Cover's great layouts. There may also be a public component as in the past. This may include going as a group from one open house to another so each open house is not open very long. Or, we may just continue as in the past with public open houses, at set times with the first weekend show casing the layouts set-up at Hastings. Let Edward know your thoughts at the meeting.

## **Note Club Time Change:**

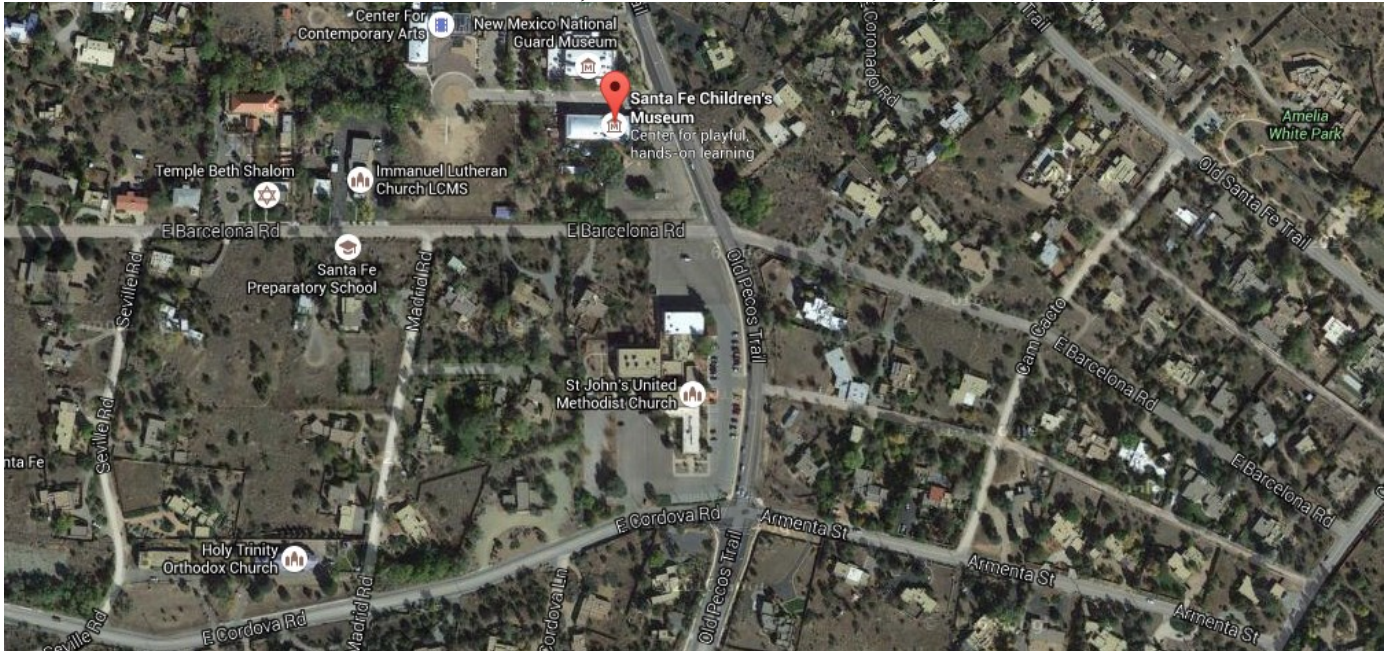
**Important:** There was concurrence last meeting to **change the meeting start time to 6:30.**

## **NEXT STOP... *Future SFMRRC Monthly Meeting Hosts***

September 13 .....	Host Needed	October 11 .....	Co-Hosts Flounders and Hayden
November 8 .....	Co-hosts Spude and Thomas	December .....	Christmas Party
January .....	Host Needed	February .....	Host Needed

.... if you would like to host a meeting, contact the secretary at 466-1476 or [spudes@msn.com](mailto:spudes@msn.com)

SFMRRRC meets: 6:30 p.m. Weds., September 13, 2017  
At the Santa Fe Children's Museum, 1050 Old Pecos Trail, Santa Fe, NM 87505



## DOWN THE TRACKS: *A Calendar of Coming Big Events*

- October tbd: Kid's Train Club re-starts at Children's Museum
- October 21, 22, 28, and Nov 4: SFMRRRC's XXth Santa Fe Model Train Show, De Vargas Mall
- November 4-5: Southwest Model Railroad Club Fall Show, Los Lunas
- November 18-19: Rails Along the Rio Grande, Albuquerque, NMRA
- November: SFMRRRC Open Houses
- December: Christmas Trains Activities

### ***Railroad Talk at Eldorado Public Library:***

Saturday, September 16, 1-2 PM, Fred Friedman will speak on the history and possible projected use(s) of the branch line running up from Lamy to Santa Fe: its construction in February 1880, its role in movies, peace, wars, and area economic development. Train at Lamy, 1884.



### **Door Prize**

At the August meeting, Bill Flounders held the monthly door prize drawing. Bob Dolci's name was pulled from the bingo drum. Thanks to Cheryl Payson, he received the popular gift certificate from Northeast Train and Model, which he donated to the kid's train club. Remember, each member actually present at a meeting – that includes those who join that evening – is eligible to have his or her name drawn for the door prize. *You can't win if you're not there.*

*If you would like to host a meeting, contact the secretary at 466-1476 or [spudes@msn.com](mailto:spudes@msn.com). Please send news to the secretary, Bob Spude, 466-1476 or E-mail to [spudes@msn.com](mailto:spudes@msn.com). This newsletter is edited and published on paper by Bob Spude; webmaster is Susan Cover <http://santafemodelrailroadclub.org/>*